

Questionnaire for float switches

Horizontal mounting

Customer data

Company	Date
Name	Phone
Department	Mobile
Address	Fax
	E-mail

Application data

Model HLS-S (fig. top)



Approval

Material

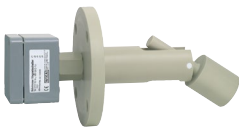
Pressure

Density

Temperature

Process connection

Model HLS-P (fig. bottom)



_____ bar

kg/m³

°C

Model HLS-Mxx (mini version)



Model	Material	Mounting	El. connection	Process connection	Article no.
HLS-M11	PP	From inside	Cable	G 1/4"	117612
HLS-M12	PP	From outside	Cable	1/2" NPT	118329
HLS-M21	Stainless steel 1.4301	From inside	Cable	G 1/8"	118330
HLS-M22	Stainless steel 1.4301	From outside	Cable	1/2" NPT	013955
HSL-M23	Stainless steel 1.4301	From outside	Connector	1/2" NPT	118332

Test requirements

3.1 material certificate (EN 10204)

Hydrostatic pressure test

NDE test(s) Description _____

Others _____

Additional notes

